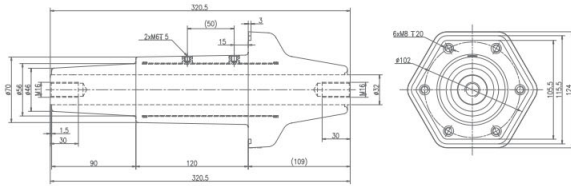


MEDIUM VOLTAGE PRODUCT SERIES

中压产品系列



产品名称 Name	电缆套管 Cable Bushing	
额定电压 Rated Voltage	12kV	24kV
额定电流 Rated Current	1250A	1250A
工频耐压 PF	42kV/1min	65kV/1min
额定冲击电压 Lighting Impulse Withstand Voltage	75kV	125kV
局部放电 PD	13. 2kV≤5pC	26. 4kV≤5pC

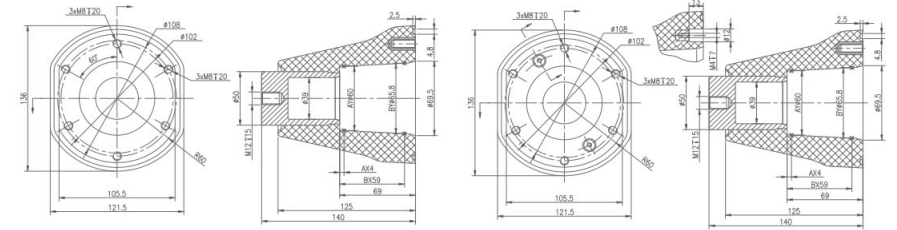


MEDIUM VOLTAGE PRODUCT SERIES

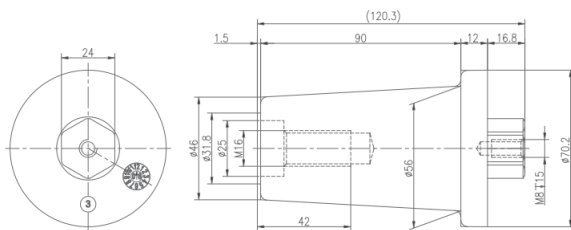
中压产品系列



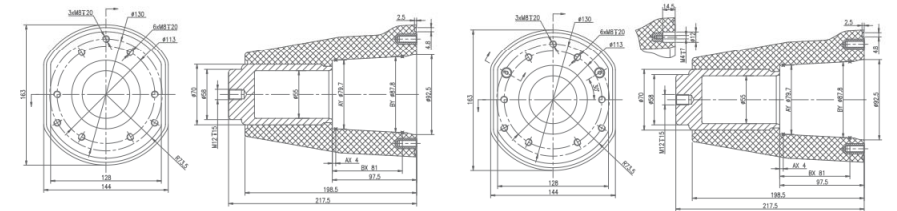
产品名称 Name	2#内锥绝缘子(不带验电/带验电) Inside Cone Type Bushing Size2 (No Voltage Indicator/Voltage Indicator)
额定电压 Rated Voltage	40.5kV
工频耐压 PF	70kV/1min
额定冲击电压 Lighting Impulse Withstand Voltage	170kV
局部放电 PD	50kV≤5pC



产品名称 Name	绝缘塞子 Insulation Plug	
额定电压 Rated Voltage	24kV	36kV
工频耐压 PF	50kV/1min	70kV/1min
额定冲击电压 Lighting Impulse Withstand Voltage	125kV	125kV
局部放电 PD	20kV≤5pC	30kV≤5pC



产品名称 Name	3#内锥绝缘子(不带验电/带验电) Inside Cone Type Bushing Size3 (No Voltage Indicator/Voltage Indicator)
额定电压 Rated Voltage	40.5kV
工频耐压 PF	70kV/1min
局部放电 PD	50kV≤5pC

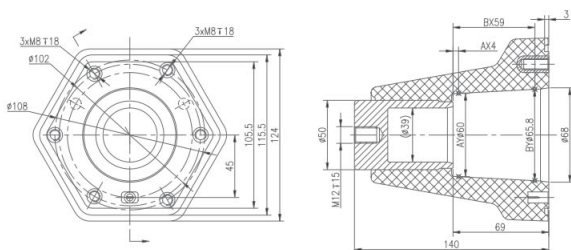


MEDIUM VOLTAGE PRODUCT SERIES

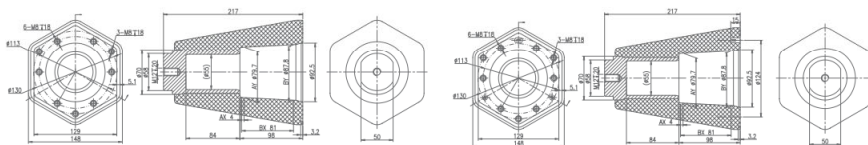
中压产品系列



产品名称 Name	2#内锥绝缘子(带验电) Inside Cone Type Bushing Size2 (Voltage Indicator)	
额定电压 Rated Voltage	24kV	40.5kV
工频耐压 PF	65kV/1min	95kV/1min
额定冲击电压 Lighting Impulse Withstand Voltage	125kV	185kV
局部放电量 PD	26.4kV≤5pC	44.6kV≤5pC



产品名称 Name	3#内锥绝缘子(不带验电/带验电) Inside Cone Type Bushing Size3 (No Voltage Indicator/Voltage Indicator)	
额定电压 Rated Voltage	40.5kV	
工频耐压 PF	70kV/1min	
局部放电量 PD	45kV≤10pC	



MEDIUM VOLTAGE PRODUCT SERIES

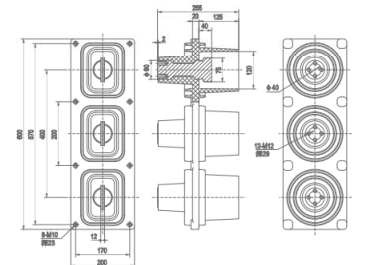
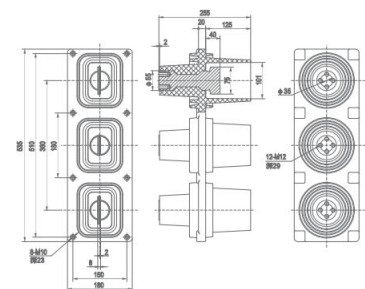
中压产品系列

产品特点

三相触头压制成一體，裝配精度高，專為日本東芝VK真空斷路器配套，也可作為手車式與母線室、電纜室的電氣連接。

Feature:

Three phase contacts are pressed into one supporting the VK vacuum circuit breaker for TOSHIBA. Also can be applied for the electrical connection with busbar chamber or cable chamber as the handcart type



VE静插底部 VE STATIC INSERT BOTTOM

绝缘件选型 Selection	产品图号 Drawing No.	安装距 Mounting Distance
PDS-630	5RA12.027.006	180
PDS-1250	5RA12.027.007	200
PDS-2000	5RA12.027.008	200

技术参数 Technical Parameter	数值 Value	单位 Unit
工频耐压 PF	42	kV/1min
局部放电量 PD	1.1Ur≤3	pC
阻燃等级 Flame Retardant Rating	V1	UL94
玻璃化温度 Tg	105±5	°C
雷电冲击电压 Lightning Impulse	75	kV
爬电比距 Creepage Distance	20	mm/kV
额定电流 Rated Current	≤2000	A
颜色 Color	红色 Red	

原材料参数 Raw Material Parameter	数值 Value	单位 Unit
吸水性 Hydroscopicity	≤0.2	%
绝缘电阻 Insulation Resistance	1.0*10 ¹⁴	Ω
击穿强度 Disruptive Strength	≥12	kV/mm
耐电弧性 Arc Resistance	180	s
冲击强度 Impact Strength	≥30	kJ/m ²
弯曲强度 Bending Strength	≥90	N/mm ²